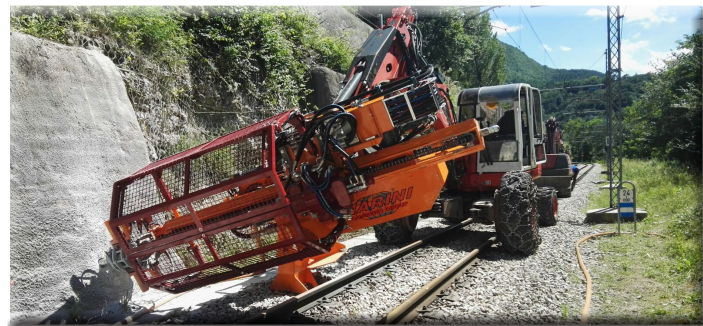
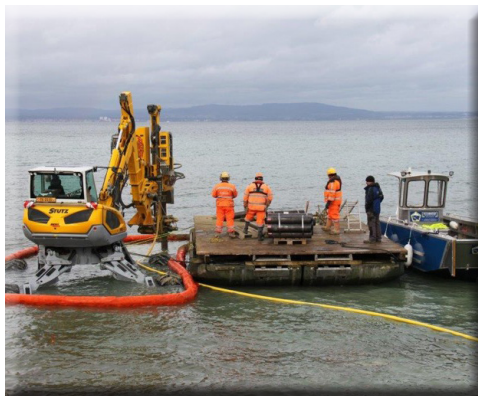
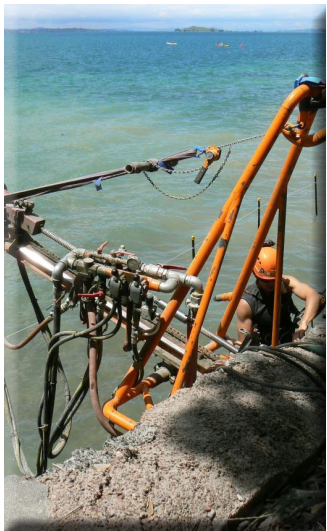


**MARINI**<sup>®</sup>  
QUARRIES GROUP



**Machines for Civil Engineering**



# MACHINES FOR CIVIL ENGINEERING

- ❑ BABY GIRAFFA ENGINEERING
- ❑ BABY GIRAFFA ENGINEERING P
- ❑ MAST - MINI - MIDI - BIG
- ❑ VOYAGER ENGINEERING SP
- ❑ VOYAGER ENGINEERING S
- ❑ VOYAGER ENGINEERING R
- ❑ VOYAGER ENGINEERING
- ❑ SPECIAL MACHINES
- ❑ DACHS
- ❑ HYDRAULIC SLIDE
- ❑ MCD-MCDP PNEUMATIC SLIDE
- ❑ BUFFALO DRILL - HOR DRILL
- ❑ SPHERICAL
- ❑ DIAMOND WIRE SAWS



INGEGNERIA CIVILE



CIVIL ENGINEERING

ACCESSORI



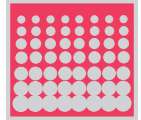
ACCESSORIES

T A G L I O



CUTTING

PERFORAZIONE



DRILLING

*...working to grow  
together...*

# BABY GIRAFFA ENGINEERING

MARINI QUARRIES GROUP







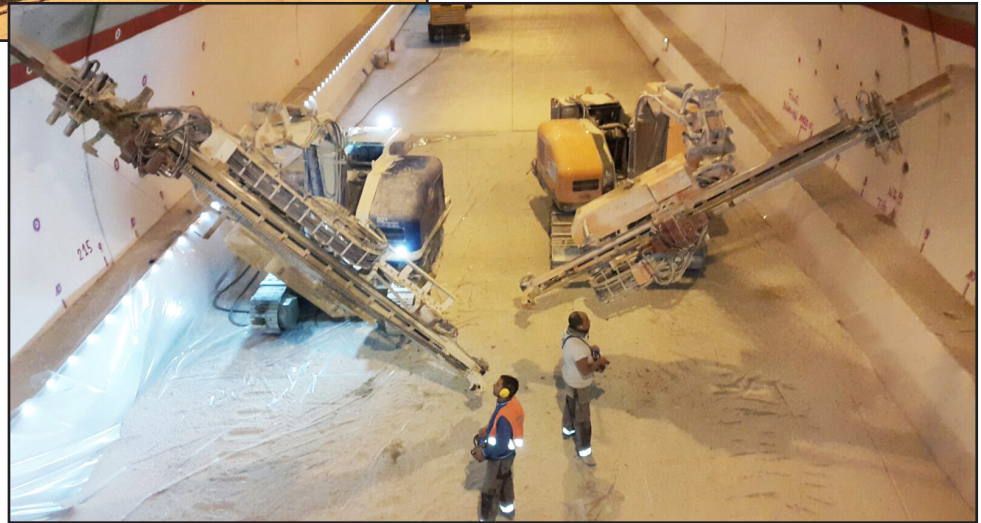












# BIG MAST

MARINI QUARRIES GROUP









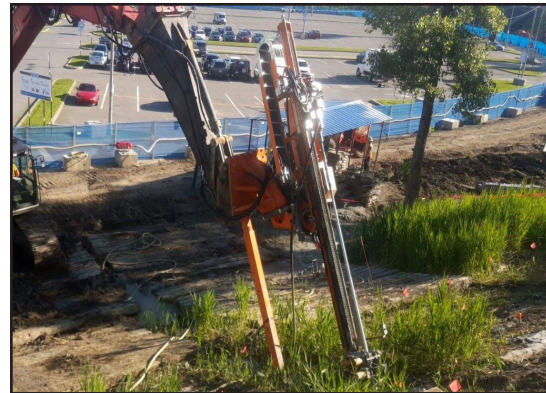
BIG MAST







## BIG MAST





# MIDI MAST - PNEUMATIC



# MIDI MAST - HYDRAULIC

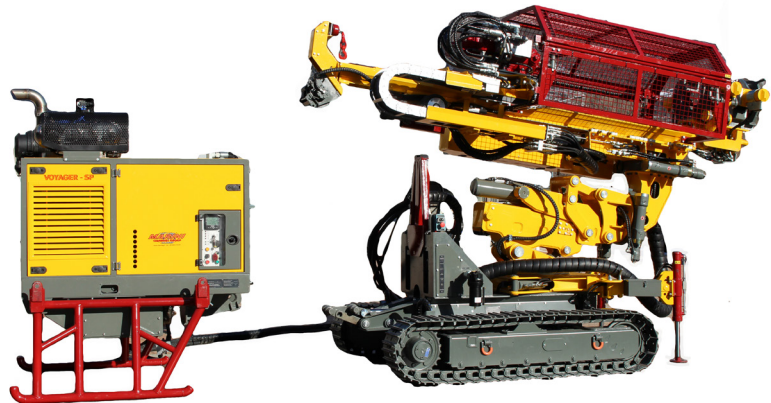
MARINI QUARRIES GROUP



# VOYAGER Engineering - SP

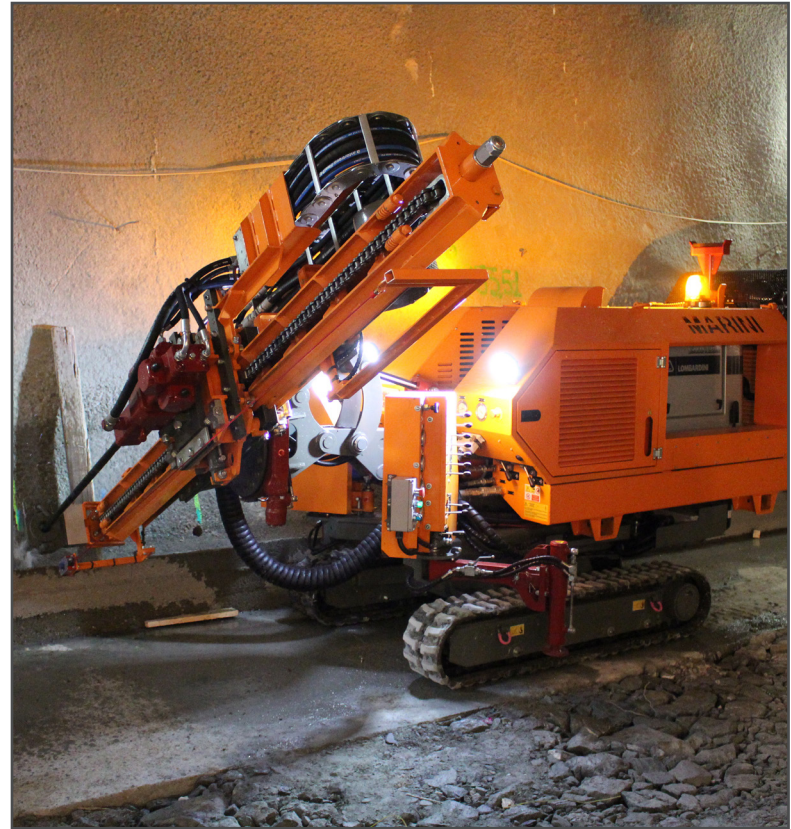
MARINI QUARRIES GROUP



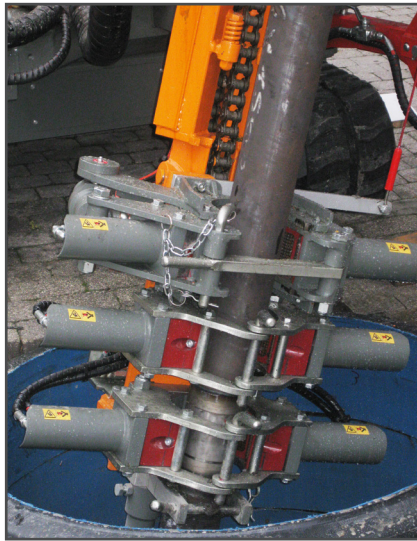


# VOYAGER Engineering - S

MARINI QUARRIES GROUP

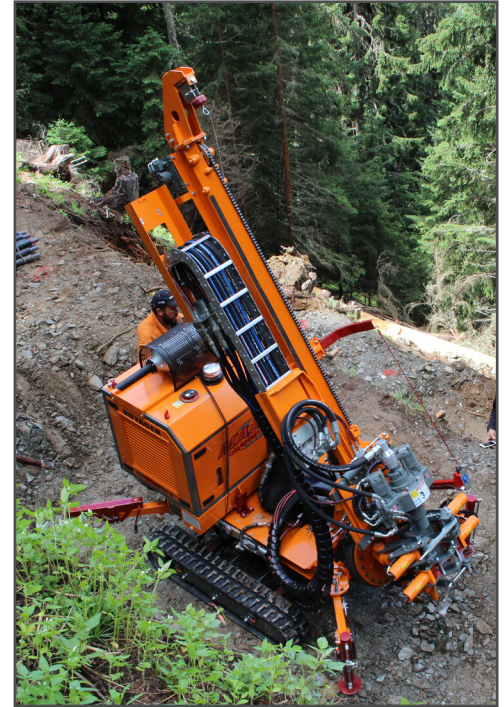
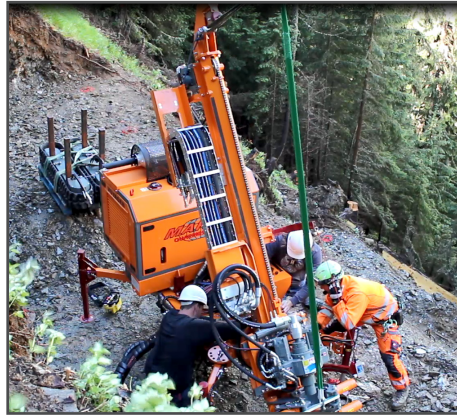
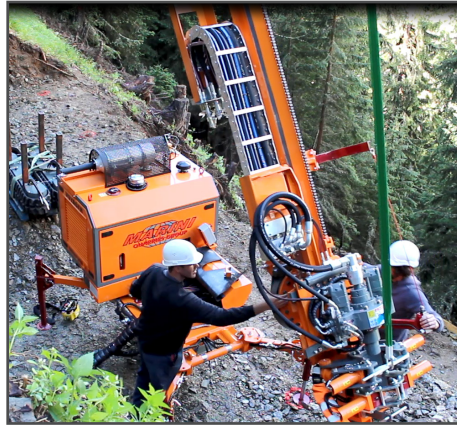






# VOYAGER Engineering Radiocomandato

MARINI QUARRIES GROUP





# VOYAGER Engineering

MARINI QUARRIES GROUP



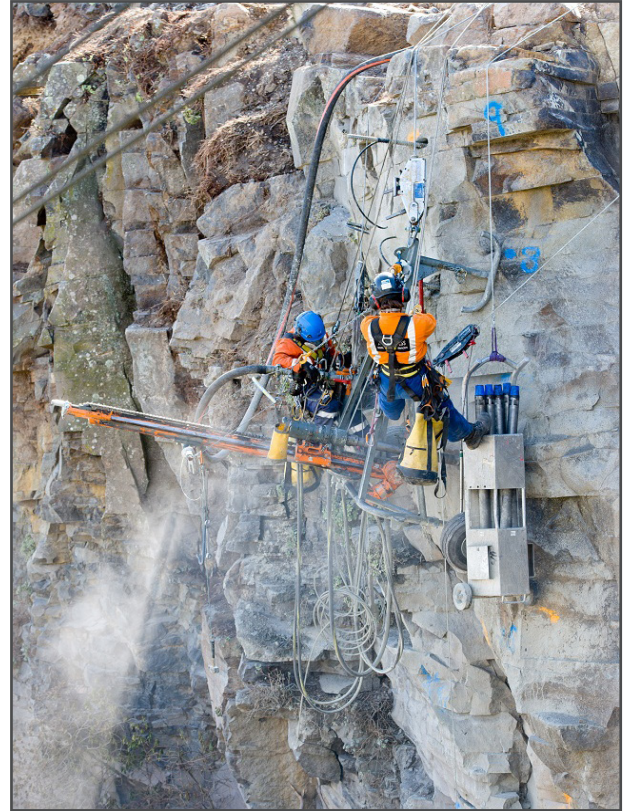
# SPECIAL MACHINES

MARINI QUARRIES GROUP



# DACHS

MARINI QUARRIES GROUP











# HYDRAULIC SLIDE

MARINI QUARRIES GROUP



# MCD-MCDP PNEUMATIC SLIDE

MARINI QUARRIES GROUP



# BUFFALO DRILL

MARINI QUARRIES GROUP



# HOR DRILL

MARINI QUARRIES GROUP



# SPHERICAL

MARINI QUARRIES GROUP





# DIAMOND WIRE SAWS

MARINI QUARRIES GROUP

















## PICCOLE MACCHINE PER GRANDI OPERE

La Marini Quarries Group, azienda leader nel campo della produzione di macchine ed apparecchiature per taglio e perforazione di marmi e graniti, grazie all'esperienza acquisita negli anni, ha progettato una serie di macchine ed attrezzature per applicazioni nel campo dell'ingegneria civile.

L'intento principale perseguito nella progettazione delle attrezzature per il taglio e la perforazione applicate all'ingegneria civile, è quello di costruire macchine compatte, leggere, versatili ed ergonomiche, in grado di adattarsi alle più svariate esigenze di lavoro. Le nostre unità da perforazione sono utilizzate per operazioni di consolidamento, ancoraggio, installazione di paramassi, paravalanghe, etc.

Le unità da taglio con filo diamantato trovano applicazione in opere di demolizione controllata di cementi armati e di rocce di vario tipo. Le macchine Marini Quarries Group per l'ingegneria civile sono ideali per lavori in contesti urbani, reti autostradali, ferrotranviarie e nella protezione civile.



## SMALL MACHINES FOR BIG WORK

Marini Quarries Group, one of the leading companies producing machines and instruments for cutting and drilling marble and granite has also planned a series of machines and instruments to be used in the field of civil engineering, thanks to the experience they acquired over the years. The main aim in planning cutting and drilling instruments has been the manufacturing of compact, light, versatile and ergonomical machines, in order to adjust themselves to the highest number of working needs. Our drilling units are used in operations concerning reinforcement, anchorage, installation of rock barriers, avalanche barriers, etc. The cutting units with diamond wire are used in works concerning controlled demolition of reinforced concrete and several kinds of rocks.

The Marini Quarries Group machines for civil engineering are ideal for work in urban contexts, motorway, rail and tram networks as well as civil protection.



## KLEINE MASCHINEN FÜR GROßE WERKE

Marini Quarries Group ist eine führende Unternehmung im Bereich der Herstellung von Maschinen und Geräten für das schneiden und bohren von Marmor und Granit. Dank jahrelanger Erfahrung in der Bohr- und Trenntechnik wurden eine Reihe von Maschinen und Geräten entwickelt, die zur Anwendung im den Bereichen des Bauingenieurwesens im Einsatz sind. Die hauptsächlich verfolgte Absicht besteht darin, kompakte, leichte, vielseitige und ergonomische Maschinen herzustellen, die in der Lage sind, sich an die unterschiedlichsten Arbeitsbedürfnisse anzupassen.

Unsere Bohrund Trenneinheiten werden für Tätigkeiten wie Gründung, Verstärkung, Verankerung, Installation von Steinschlagund, Lawinenschutz, usw. verwendet. Die Einheiten für den Schnitt mit Diamantseilen finden Anwendung beim kontrollierten Abbau von Stahlbeton und von Felsen unterschiedlichster Arten. Die Maschinen von Marini Quarries Group für das Bauingenieurwesen sind ideal einsetzbar von städtischen Arbeiten, vom Autobahnnetz, im Geleise- und Trassebau und im Zivilschutz.



## PETITES MACHINES POUR DE GRANDES OEUVRES

Marini Quarries Group, une maison leader dans le domaine de la production de machines et d'appareillages pour la coupe et le forage de marbres et de granits, grâce à l'expérience acquise dans les années, a projeté aussi une série de machines et d'appareillages pour des applications dans le domaine du génie civil. L'intention principale poursuivie, dans le projet d'appareillages pour la coupe et le forage qui sont appliqués au génie civil, a été celle de construire des machines compactes, légères, universelles et ergonomiques, pour s'adapter aux exigences de travail. Nos unités de forage sont utilisées pour des opérations de consolidation, d'ancrage, d'installation de protège-blocs, paravalanches, etc. Les unités de coupe avec le fil diamanté ont de l'application dans des œuvres de démolition contrôlée de bétons et de roches de type différent. Les machines Marini Quarries Group, pour le génie civil, sont idéales pour des travaux dans des contextes urbains, des réseaux autoroutiers, des réseaux pour les chemins de fer et les tramways, et dans la protection civile.



## PEQUEÑAS MAQUINAS PARA GRANDES OBRAS

Marini Quarries Group, empresa líder en el sector de la producción de maquinarias y equipos para el corte y la perforación de mármoles y granitos, gracias a la experiencia adquirida a lo largo de muchos años, acaba de diseñar una serie de máquinas y accesorios para las aplicaciones en el ámbito de la ingeniería civil. La finalidad principal perseguida en el proyecto de los equipos para el corte y la perforación aplicadas a la ingeniería civil ha sido la construcción de máquinas compactas, ligeras, versátiles y ergonómicas, capaces de adaptarse a las exigencias de trabajo más diferentes. Nuestras unidades de perforación se utilizan para las operaciones de consolidación, el anclaje, la instalación de parabloques, paranieves, etc. Las unidades de corte con hilo diamantado encuentran su aplicación en las obras de demolición controlada de cementos armados y de piedras de varios tipos. Las máquinas Marini Quarries Group para la ingeniería civil son ideales para los trabajos al interior de contextos urbanos, de las redes de autopistas y ferrocarriles y en la protección civil.



MARINI QUARRIES GROUP S.R.L.

Via Beura 44-28844 Villadossola (VB)-ITALY

Tel.+39 0324 575106 Fax. +39 0324 54096

Web site [www.mariniqg.it](http://www.mariniqg.it)

email: [mariniqg@mariniqg.it](mailto:mariniqg@mariniqg.it)

